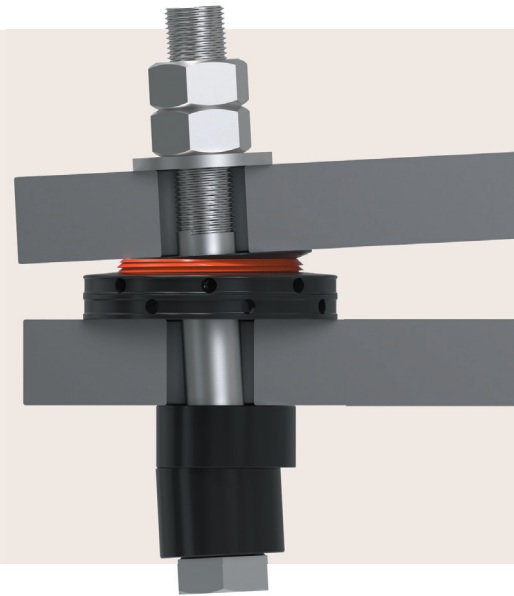




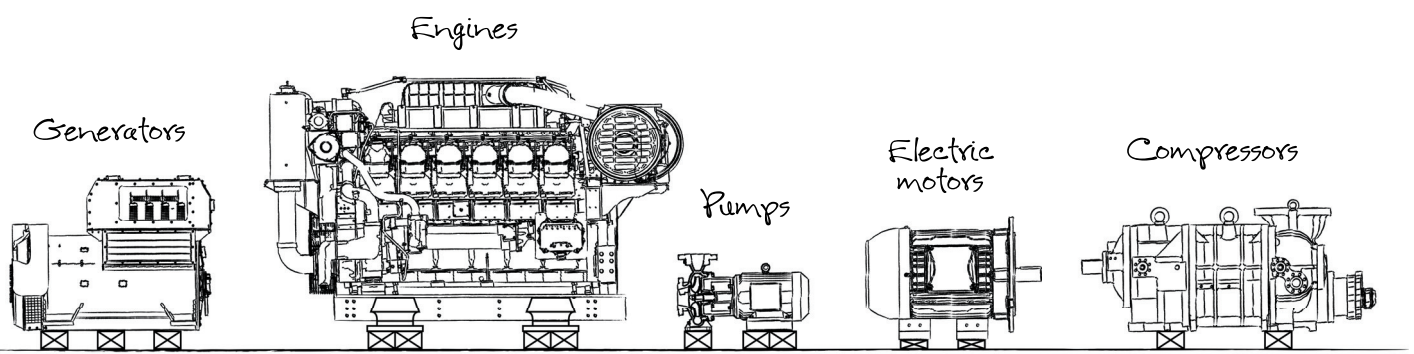
ROTACHOCK® SLIMLINE

RotaChock® is an adjustable, self-leveling, and reusable chock for mounting rotating equipment. The RotaChock® SlimLine is a blend of engineering and years of field experience that has resulted in a robust, stiff, and elegant gap-filler to end machinery Soft-Foot.

- ✓ **ROTACHOCK® ELIMINATES SOFT-FOOT**
- ✓ **ROTACHOCK® FILLS THE PARALLEL AND ANGULAR GAP**
- ✓ **ROTACHOCK® IS RE-ADJUSTABLE, MAKING REALIGNMENT EASY**
- ✓ **ROTACHOCK® SAVES TIME AND MONEY OVER OTHER CHOCKING SOLUTIONS**



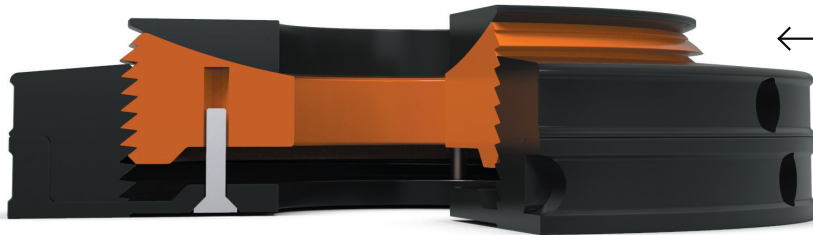
ROTACHOCK® CAN BE USED FOR MOUNTING ALL TYPES OF ROTATING AND CRITICALLY ALIGNED EQUIPMENT, LIKE



ROTACHOCK® SLIMLINE DESIGN HAS THE FOLLOWING DESIGN FEATURES

Spherical top ring for angular difference up to 2° between the machine foot and the foundation.

Standard **ACE** finish: **Anti-Corrosion Enhanced** for cost-effective corrosion protection.



Buttress thread design for maximum strength and stiffness.

The footprint is large and reduces surface pressure.

Tool groove and holes to aid installation with a wide range of tools.

ROTACHOCK® SELECTION IS EASY

Check foundation bolt diameter

Check gap height

Select RotaChock® size

Scan QR for the RotaChock® selection tool

ROTACHOCK® SLIMLINE DIMENSION CHART

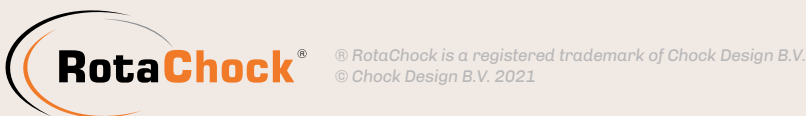
The standard RotaChock® SlimLine are manufactured from S355 (DIN1.0570), with the threaded parts made of alloy steel (DIN 1.7225 - 42CrMo4), and Anti-Corrosion Enhanced.

RotaChock® SlimLine	Rated load	Outside ø	Thread ø	Inside ø	Min. height	Design height	Max. height	Standard bolt size	Pitch	Weight
	kN	mm	mm	mm	mm	mm	mm	M	mm	kg
RC3-SL	250	76	55	28	20	25	30	16/27	1.6	0.6
RC4-SL	300	102	73	31	20	25	30	20/30	2.1	1.1
RC5-SL	600	127	95	41	25	30	35	30/39	2.1	2.0
RC6-SL	900	152	115	41	30	35	40	36/39	2.1	3.2
RC7-SL	1200	178	135	54	30	35	40	39/52	2.1	4.9

TO INSTALL ROTACHOCK® YOU MUST COMPLETE FOLLOWING STEPS

- 1** Clean
- 2** Check
- 3** Alignment
- 4** Fill the GAP
- 5** Install foundation bolts
- 6** Check final alignment

Scan QR for the installation video



The contents of this publication are the copyright of the publisher and may not be reproduced (even extracts) without prior written permission having been granted. Every care has been taken to ensure the accuracy of the information in this publication. Still, no liability can be accepted for any loss or damage, whether direct, indirect, or consequential, arising from using the information contained herein.